



ART & VISION: SEEING IN 3-D[®]

KEY CONCEPT

PARTS OF THE EYE

The iris is the colored part of your eye. It has two muscles that open and close your pupil.

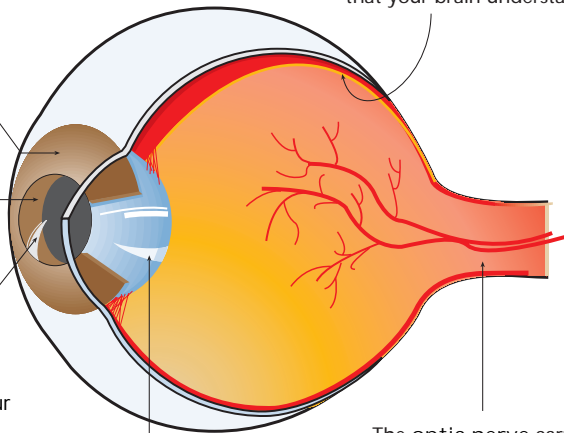
The pupil is the hole in the middle of your iris. It changes size to let more or less light into your eye.

The curved cornea bends light into your eye. It's tough and clear like a windshield and protects your eye from dust.

The lens is clear and flexible. It changes shape to focus light onto your retina.

The retina is the lining inside the back of your eye. Light-sensitive cells on the retina, called rods and cones, change light into messages that your brain understands.

The optic nerve carries the messages from your retina to your brain.

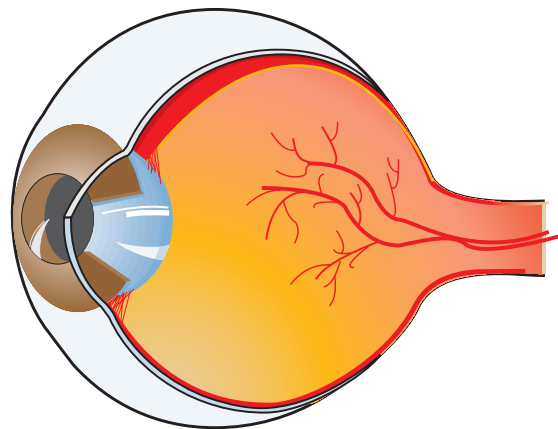


ACTIVITY

NAME THE PARTS OF THE EYE

Can you name the parts of the eye? Color and identify the different parts of this eye cross-section. (Answers on page 6).

Iris
Retina
Lens
Pupil
Cornea
Optic Nerve



THE HUMAN
VISUAL SYSTEM



A C T I V I T Y

D R A W Y O U R E Y E

Draw a picture of your eye (you might look in a mirror) and include these parts:

Pupil

Iris

Eyelashes

Eyebrow

THE HUMAN
VISUAL SYSTEM

